

Buckham Center!  
Central & Division  
Faribault, MN 55021

Nonprofit Organization  
U.S. Postage Paid #12  
Faribault, MN 55021

**POSTAL CUSTOMER**  
**Carrier Route Presort**



# Buckham Bulletin

City of Faribault & School District 656 Events & Activities  
**September-November 2010**



# Faribault Public Schools

## District Office

Phone: 507-333-6000

2800 1st Avenue NW

Faribault, MN 55021

## Faribault School Board

The District 656 School Board represents community residents dedicated to providing a quality education for District children. School board meeting dates, board agendas and minutes are all available off the school website:

[www.faribault.k12.mn.us](http://www.faribault.k12.mn.us)

## Faribault School Board

**Bob Stepaniak, Superintendent**

Phone: 333-6016

[bob\\_stepaniak@faribault.k12.mn.us](mailto:bob_stepaniak@faribault.k12.mn.us)

**David Korbel, Director**

Phone: 334-5490

[david\\_korbel@faribault.k12.mn.us](mailto:david_korbel@faribault.k12.mn.us)

**Deb Davis, Vice Chair**

Phone: 334-5207

[deb\\_davis@faribault.k12.mn.us](mailto:deb_davis@faribault.k12.mn.us)

**John Lorenz, Director**

Home: 507-333-0944

[john\\_lorenz@faribault.k12.mn.us](mailto:john_lorenz@faribault.k12.mn.us)

**Jason Engbrecht, Clerk** (Appointed 6/14/2010)

Home: 507-334-2711

[jason\\_engbrecht@faribault.k12.mn.us](mailto:jason_engbrecht@faribault.k12.mn.us)

**Jerry Robicheau, Chair**

Home: 507-334-4403

[jerry\\_robicheau@faribault.k12.mn.us](mailto:jerry_robicheau@faribault.k12.mn.us)

**Richard H. Berge, Director**

Home: 507-332-7206

[richard\\_berge@faribault.k12.mn.us](mailto:richard_berge@faribault.k12.mn.us)

**James Wolf, Treasurer**

Office: 507-332-4733

[james\\_wolf@faribault.k12.mn.us](mailto:james_wolf@faribault.k12.mn.us)



## Open Houses & Registration Days

Parents and students are invited to open houses to meet teachers, get acquainted with the schools, and check out student classrooms.

### McKinley Open House & Registration

Tues. Aug. 31, 2010, 10am-12:30pm & 6pm-7pm

**Jefferson:** Thurs. Sept. 2, 2010, 5-6pm

**Lincoln:** Wed. Sept. 1, 2010, 5-6pm

**Roosevelt:** Thurs. Sept. 2, 2010, 5-6pm

**Middle School:** Wed. Sept. 1, 2010, 4-8pm

**High School:** Wed. Sept. 1, 2010, 4-9pm

### Adult Basic Education

ESL Student Registration

Sept. 15 & 16, 10am-2pm & 5-8pm



Bob Stepaniak

## A Note from the Superintendent

Every school year opens with new challenges and exciting changes and this year will be no different. In fact, I would argue that the 2010-11 school year will be unusually noteworthy for a variety of reasons. Certainly, there will be the usual excitement surrounding new teachers, new classmates and, for some, a different school. But this also promises to be a year of transition for our District with long-lasting implications.

To begin with, there will be important decisions to be made by our voters in the November election. Not only are four School Board seats open but voters will be asked to renew the existing operating levy. There is more information on the levy question in this Bulletin. Please take the time to look it over.

The new School Board, which takes office in January, will immediately become involved in interviewing and selection of a new superintendent. That person will start next July 1. The Board is committed to conducting an extensive and open search to find the right person for our community. If you would like to weigh in on what type of leadership skills the next superintendent should have, feel free to contact any or all of our Board members.

## School District Buildings & Grounds

**Kevin Hildebrandt**

Phone: 507-333-6032

[khildebrandt@faribault.k12.mn.us](mailto:khildebrandt@faribault.k12.mn.us)

## Summer 2010 Maintenance

The photo to the right shows the last stages of renovation of the track at the Bruce Smith Sports Complex at North Alexander Park.

Funding of this project has been made possible with the 2009 Bond Referendum. Other maintenance included in

Our schools will continue to focus on improving academic achievement. Although we can point to some improvement this year, we are still not where we want to be. New staff and programs have been added to enhance our efforts toward student learning for all our kids.

Without a doubt, however, the biggest concern this year will be the adjustments to decreasing financial resources. Although it is too early to be sure, it appears that the state will have to seriously consider reducing financial support for public schools. Today, it is impossible to find anyone who thinks that schools will avoid serious financial trouble next spring. If the District were to lose its operating levy and also see a cut in state aid, the results will be extremely serious for our schools. We have worked hard to be as fiscally stable as possible, however, the financial clouds on the horizon look to be more serious than we have ever seen before.

So, as I said, it will be a noteworthy year. Even though these challenges await us, we are happy to see our students return to the Faribault Public Schools. We promise to do all we can to support them.

Bob Stepaniak

Superintendent School District 656

Email: [bob\\_stepaniak@faribault.k12.mn.us](mailto:bob_stepaniak@faribault.k12.mn.us)



this referendum cover projects such as roofing, window replacement, restroom remodeling, parking lot replacement, HVAC and Pool upgrades, and boiler replacements.



## Alumni Spotlight

### Bruce P. Smith FHS Class of 1938

Nicknamed "Boo", Bruce Smith was an American football player best known for winning the Heisman Trophy in 1941 and for being inducted into the College Football Hall of Fame in South Bend, Indiana.



Smith is Minnesota's Only Heisman Trophy Winner

Smith was born in Faribault, MN where he excelled in high school football under the legendary football coach Win Brockmeyer, and then he attended the University of Minnesota. He played halfback for the back-to-back national champion Gophers in 1940 and 1941. Smith was captain of the 1941 team. He received the Heisman two days after the attack on Pearl Harbor. Smith earned first team All-American and All-Big Ten honors in 1941.

During World War II he served as a United States Navy fighter pilot. After the war, he briefly played in the NFL with the Green Bay Packers and the Los Angeles Rams.

Source: Wikipedia





# 2010-2011 School Info

## FHS Freshmen Orientation

Tuesday, September 1, 8:00-12:00pm  
FHS Nomeland Gym

## FHS Picture Days

Wednesday, September 1, 8:00-3:00pm  
Thursday, September 2, 8:00-3:00pm

## Registration

Students currently attending Faribault Public School are automatically enrolled for the following school year. Students new to the school district may call 333-6012 to find the location to register.

### Registration Locations:

**Grades K-5 & ECFE:** Register at the District Office, 7:30am-4:00pm. Call 333-6012 for details.

**Grades 6-8:** Register at Middle School Office, 7am-4pm, 704 17th St. SW, call for details at 333-6300.

**Grades 9-12:** Register at the FHS Guidance Office from 7:30am-4pm. Call at 333-6200 for an appointment. Location: 330 9th Ave SW.

### Grades 10-12 FALC

Register at FALC-HS from 7:30am-4pm, 2855 NW 1st Avenue, or call the FALC office at 333-6187.

### Adult Basic Ed

GED Testing by pre-registration only. You will need a photo identification at time of registration. Testing: 6pm-9:30pm.

### McKinley Early Childhood Center

- McKinley Open House & Registration  
Tues. Aug. 31, 2010, 10am-12:30pm & 6pm-7pm

- ECSE Registration

For birth-age 3, call 333-6804, for ages 3-5, call 333-6455.

- Early Childhood Special Education  
For Birth-3yrs. of age, call 333-6804.  
For 3-5 yrs. of age, call 333-6833.

- Preschool Screening, call 333-6806

### Bring this information with you:

#### Kindergarten Students

- Birth Certificate
- Immunization records
- Proof of preschool screening

#### Grades 1-12

- Immunization records
- Last report card
- Address of previous school

#### GED Testing

- Photo identification

#### Address Changes

- Contact your school of attendance

## Severe Weather

### Call 333-6057!

During inclement weather, the Executive Director of Operational Support Services will determine when schools will close for the day, dismiss early or delay in starting. Radio stations KDHL 920 AM, WCCO 830 AM, and Metro-area TV stations are notified immediately of all decisions. We have a dedicated line to school emergencies, 333-6057.

*Please do not call the school or administrative office as phone lines are needed to make calls to parents or guardians, the bus company, etc..*

Parents may pick up their children early at any time during inclement weather. Parents may keep their children at home if they feel the weather is too severe to send them to school, even though school may be conducted. Please be sure your child knows what to do if there is no one home when school has been dismissed early.

## Student Illness

Parent or guardian must NOTIFY THE SCHOOL if student will be absent at the start of the school day. Students who are in school after an illness of unknown cause, appear in ill health, or have a contagious condition, may not be allowed to enter class.

If restriction from class is necessary, parents or guardians will be notified of the reason for denial and referred to their family physician. Students may not be re-admitted until they receive a note from their physician. Call these numbers if your child is ill:

ECFE: 333-6460 Jefferson: 333-6501

FHS: 333-6102 Lincoln: 333-6601

FMS: 333-6302 Roosevelt: 333-6701

## Release of Information

Select information from student records can be released and made public without further authorization from parents or guardians. Information covered under this policy includes the student's name, parent/guardian name, address, date of birth, class designation, extra-curricular participation, achievement awards or honors, weight and height (if a member of an athletic team), photograph and school/district attended before he or she enrolled in the Faribault Public Schools. Parents wishing to withhold information from distribution must make the request to the Superintendent. A legal notice regarding this information is published each August in the Faribault Daily News.



## Bus Information

**Call Faribault Transportation at 334-5121 if you are new to the District, if you've moved, have daycare, or changed schools so we can provide proper bus service to all children.**

### Call 333-6029 for Busing Eligibility.

Busing eligibility includes K-8 public and parochial students who live one mile or further from school and Gr. 9-12 students who live two or miles or from school and school-age handicapped students. Also eligible are students in gr. K-3 who have hazardous crossings.

### Busing Guidelines:

Students in K-1 who live within the city limits need a bus pass. Passes are presented to the bus driver upon request. Students must ride the assigned bus to and from school-there are no exceptions. Bus stops are established by authorization of the school district administration. Please remember, school bus transportation is a privilege, not a right.

### Transportation Rule Changes for 2010-11

Faribault Schools recently informed parents of an important change to its transportation practices. Beginning this school year, families are required to designate one pick-up spot in the morning and one drop-off site in the evening. Students will now be transported to those sites only, except in rare emergency situations.

## Attendance Policy

The MN Compulsory Attendance Law establishes that every child enrolled in kindergarten through age 16 shall receive instruction. The law stipulates that the parent/guardian is responsible for the student's consistent school attendance.

The Board recognizes that regular and consistent school attendance is essential for academic success and, therefore, expects every student to attend school and class on time every day. District procedures, strategies and interventions have been developed to work jointly with families as we promote daily attendance. These attendance procedures will be broadly communicated to families and students at registration and periodically throughout the school year.

## Wellness Policy

Please see the school district's website for more details and the complete Wellness Policy: [www.faribault.k12.mn.us](http://www.faribault.k12.mn.us)

### Purpose

The purpose of this policy is to assure a school environment that promotes and protects a student's health, well-being, and ability to learn by supporting healthy eating and physical activity.

### General Statement of Policy

A. The School Board recognizes that nutrition and physical education are essential components of the educational process and that good health fosters student attendance and education.

B. The school environment should promote and protect students' health, well-being, and ability to learn by encouraging healthy eating and physical activity.

C. The school district encourages the involvement of students, parents, teachers, food service staff, and other interested persons implementing, monitoring, and reviewing school district nutrition and physical activity policies.

D. Children need access to healthy foods and opportunities to be physically active in order to grow, learn, and thrive.

E. Students in grades K-12 will have opportunities, support, and encouragement to be physically active on a regular basis.

F. Qualified food service personnel will provide students with access to a variety of affordable, nutritious, and appealing foods that meet the health and nutrition needs of students. Food service will try to accommodate the religious, ethnic, and cultural diversity of the student body in meal planning.

### Wellness Guidelines

#### A. Nutritional Guideline Goals

#### B. Physical Activity Guideline Goals

#### C. Nutritional Education & Promotion Goals

#### D. Conditions Governing Vending Machines

1. The district is committed to assisting students to make healthy beverage choices through the implementation of the vending machine contract.

#### E. Communication with Parents

1. The school district recognizes that parents and guardians have a primary and fundamental role in promoting and protecting their children's health and well-being.

2. The school district will support parental efforts to provide a healthy diet and daily physical activity for their children.

3. The school district will make available information about physical education and other school-based physical activity opportunities and will support parental efforts to provide their children with opportunities to be physically active outside of school.

This change was adopted by the School Board last spring due to an increasing number of students changing bus stops on a regular basis. Many students were requesting to ride different buses on different days making it difficult for drivers to know for sure where a student was to be transported. "Our biggest fear was losing a child because of a miscommunication" reported Transportation Director Tom Merrill. "As our buses fill up, it has also become very difficult to find a seat for students who want to ride a different bus than the one assigned". Students may get on or off at different stops, with parental permission, if it is on their regular bus route.

It is also felt that students are the safest when the bus driver knows them. By requiring students to stay on the same bus, the drivers will have an easier time knowing the students. This change should help ensure the safety of all our students who ride school buses.





## District Phone Numbers

### School District Office 2800 1<sup>st</sup> Avenue NW

**General Information** 333-6000  
**Emergency School Info** 333-6057  
**Superintendent** 333-6010  
Activities 333-6210  
Business Office 333-6051  
Curriculum 333-6010  
Enrollment Info 333-6012  
Facilities 333-6030  
Food Service 333-6772  
Health Nursing 333-6104  
Information Technology 333-6323  
MARSS 333-6012  
Personnel Office 333-6006  
Special Education 333-6004  
Transportation 333-6029

### Area Learning Center

**2855 1<sup>st</sup> Avenue NW** 333-6187  
ALC Evening Program 333-6186

### Off-Campus School

**128 Prairie Avenue** 334-0387

### Community Education

Paul Peanasky 334-2064  
Adult Basic Ed 333-6471  
ECFE 333-6460  
Comm. Enrichment 384-0516  
Kids World 333-6563  
Project ABLE 384-0513  
Youth Development 333-6160

### Deaf Preschool

**128 PGM Quinn Hall** 332-7667

### Faribault High School

**330 9<sup>th</sup> Avenue SW**

General Info 333-6100  
Principal 333-6249  
Reporting An Absence 333-6102  
Media Center 333-6177  
Nurse's Office 333-6286  
Custodial Office 333-6259  
Kitchen 333-6106  
FHS Events Hotline 333-6109  
Counselor's Office 333-6200  
Activities Office 333-6210

### Faribault Middle School

**704 17<sup>th</sup> Street SW**

General Information 333-6300  
Principal 333-6313  
Reporting An Absence 333-6302  
Media Center 333-6317  
Nurse's Office 333-6304  
Custodial Office 333-6305  
Kitchen 333-6430

### Jefferson Elementary

**922 Home Place**

General Information 333-6500  
Principal 333-6545  
Reporting An Absence 333-6501  
Media Center 333-6506  
Nurse's Office 333-6504  
Kitchen 333-6505

### Lincoln Elementary

**510 Lincoln Avenue**

General Information 333-6600  
Principal 333-6660  
Reporting An Absence 333-6601  
Media Center 333-6620  
Nurse's Office 333-6604  
Kitchen 333-6605  
Kids World 333-6680

### Roosevelt Elementary

**925 Parshall Street**

General Information 333-6700  
Principal 333-6733  
Reporting An Absence 333-6701  
Media Center 333-6717  
Nurse's Office 333-6704  
Kitchen 333-6705  
Kids World Office 333-6724

### Nerstrand Elem. Charter School

**205 S 2<sup>nd</sup> St, Nerstrand**

General Information 333-6850

### Rice County Day Treatment

**201 Lyndale Ave. So. Suite A**

General Information 333-6480

### Faribault Community Center

**15 Division Street W.** 334-2064

Weather Cancellations 384-0539



## School Activities Office

**Ken Hubert, Director**

**Phone: 333-6210**

**FHS Office, 330 8th Ave. SW**

Student Activities are an important part of the school experience. Generally, students involved in activities are more successful and more connected to school. Because of this, our schools offer a variety of opportunities and encourage students to be involved. To keep these opportunities available, a fee must be assessed for each activity in which a student participates. Fees are payable at the High School Activities Office.

### Athletic Fees 2010-2011

#### High School Sports

Tier 1: Hockey, Gymnastics \$150  
Tier 2: All other sports, athlete's first two seasons \$130. (Athlete's third sport \$100)

#### Middle School Sports

Athlete's 1st/2nd season, \$60.  
(Third sport \$40)

#### Athletic Reduced Lunch Qualifiers

##### High School Sports

Tier 1: Hockey, Gymnastics \$120  
Tier 2: All other sports, athlete's 1st/2nd season \$104 (Athlete's third sport \$80)

##### Middle School Sports

Athlete's 1st/2nd season \$48  
(Third sport \$32)

#### Athletic Free Lunch Qualifiers

##### High School Sports

Tier 1: Hockey, Gymnastics \$90  
Tier 2: All other sports, athlete's 1st/2nd season \$78 (Athlete's third sport \$60)

##### Middle School Sports

Athlete's 1st/2nd season \$36  
(Third season \$24)

#### Non-Athletic Participation

Grades 9-12: \$40 (Theatre, One-Act Plays, Math & Science Teams)

#### Intramural Participation

Grades 9-12: \$18  
Athletic Event Ticket Prices  
Students \$4, Adults \$6

#### Activity Refunds

Students who drop an activity during the first two weeks of the activity, along with a written statement from a coach or advisor will be eligible for a refund.

[www.big9.org](http://www.big9.org)



See the latest Faribault school sports and activities details on the Big 9 website!



## School Dates 2010-2011

Sept. 6	Labor Day Holiday
Sept. 7	First Day of School
Oct. 13	Early Dismissal
Oct. 18	FHS Evening Conf. 9-12
Oct. 20	No School All P/T Conf.
Oct. 21-22	No School ECFE-Gr. 12
Nov. 10	Early Dismissal
Nov. 24	No School All
Nov. 25-26	No School Thanksgiving
Dec. 8	Early Dismissal
Dec. 24-31	No School All Winter Break
Jan. 3	School Resumes
Jan. 17	No School All
Feb. 10	FHS Evening Reg. Fair
Feb. 11	No School ECFE-Gr. 12 P/T Conf. E-8/Reg. Fair 9-12
Feb. 14	No School All
March 3	FHS Evening Conf. 9-12
March 9	Early Dismissal
Mar. 21-25	No School All Spring Break
April 13	Early Dismissal
May 11	Early Dismissal
May 30	No School Memorial Day
June 2	Last Day of School
June 5	Graduation Class of 2011
June 6-July 15	Gr. 9-12 Summer School

**Quarters:** Nov. 5 (41 days), Jan. 14 (41 days),  
April 1 (47 days) June 2 (43 days)

**Semesters:** Jan. 14 (82 days), June 2 (90 days)

**Breaks:** Winter Dec. 24-31, Spring Mar 21-25.

	August							September							October						
	S	M	T	W	T	F	S	S	M	T	W	T	F	S	S	M	T	W	T	F	S
First/Last Student Days	1	2	3	4	5	6	7				1	2	3	4						1	2
Parent/Teacher Conferences K-8	8	9	10	11	12	13	14	5	6	7	8	9	10	11	12	13	14	15	16	17	18
Parent/Teacher Conferences 9-12	15	16	17	18	19	20	21	19	20	21	22	23	24	25	17	18	19	20	21	22	23
Early Dismissal	22	23	24	25	26	27	28	26	27	28	29	30			24	25	26	27	28	29	30
School Not In Session	29	30	31												31						
Graduation																					
9-12 Summer School First/Last Days																					
	November							December							January						
	M	T	W	T	F	S		S	M	T	W	T	F	S	S	M	T	W	T	F	S
	1	2	3	4	5	6	7	5	6	7	8	9	10	11	2	3	4	5	6	7	8
	14	15	16	17	18	19	20	12	13	14	15	16	17	18	9	10	11	12	13	14	15
	21	22	23	24	25	26	27	19	20	21	22	23	24	25	16	17	18	19	20	21	22
	28	29	30					26	27	28	29	30	31		23	24	25	26	27	28	29
															30	31					
	February							March							April						
	S	M	T	W	T	F	S	S	M	T	W	T	F	S	S	M	T	W	T	F	S
	1	2	3	4	5	6	7	1	2	3	4	5	6	7	1	2	3	4	5	6	7
	13	14	15	16	17	18	19	6	7	8	9	10	11	12	3	4	5	6	7	8	9
	20	21	22	23	24	25	26	13	14	15	16	17	18	19	10	11	12	13	14	15	16
	27	28						20	21	22	23	24	25	26	17	18	19	20	21	22	23
								27	28	29	30	31			24	25	26	27	28	29	30
	May							June							July						
	S	M	T	W	T	F	S	S	M	T	W	T	F	S	S	M	T	W	T	F	S
	1	2	3	4	5	6	7	1	2	3	4	5	6	7	1	2	3	4	5	6	7
	8	9	10	11	12	13	14	8	9	10	11	12	13	14	3	4	5	6	7	8	9
	15	16	17	18	19	20	21	12	13	14	15	16	17	18	10	11	12	13	14	15	16
	22	23	24	25	26	27	28	19	20	21	22	23	24	25	17	18	19	20	21	22	23
	29	30	31					26	27	28	29	30			24	25	26	27	28	29	30





## District Meal Service

**Office: 333-6772**  
**Roosevelt Elementary**  
**Laurie Deal, General Manager**  
**School Lunch Program**

Eating healthy school meals has numerous benefits for your children. Countless studies show that children who eat a nutritious breakfast and lunch perform better in the classroom. Yet, many eligible families do not take the few simple steps to complete the Application for Educational Benefits form and take advantage of these benefits.

The free & reduced-price meal program is sponsored by the State of MN and helps families afford the cost of meals. Breakfast is free for those children who qualify for both free AND reduced-priced meals (lunch is only 40 cents for those who qualify for the reduced meal price).

If your application is approved, you will help our school district qualify for additional funding or discounts for educational programs. Don't miss out on the chance to help your children do better in school and achieve their dreams.

**Meal Payments:** We have a prepaid accounting system for school meals. There must be a positive balance in the student's account for them to receive a meal. We accept payments online, by mail, or at each school's open house. Pre-payment for school meals is available online through PayPams, our Parent Account Management System. You may access this site through the Faribault Public Schools website (under Parents, then "online payment.") or call 1-888-994-5100.



This system will allow you to pay by credit/debit card, set up automatic payment plans, view account balances, and receive automatic notification on balance status.

Please contact us at 333-6772 if you need assistance with the online payment process or haven't received your Application for Educational Benefits (we

mail these in August).

### Mail all meal payments and Application for Educational Benefits to:

Roosevelt Elementary  
 Food Service Dept.  
 925 Parshall Street  
 Faribault, MN 55021

### Online Payment Details

Pre-pay online or by phone with a credit card or electronic check from the comfort of your home or office! For food account questions call 333-6772.

### Elementary Schools

Breakfast in Classroom...\$ .40  
 Milk ..... \$ .45  
 Lunch..... \$ 1.80

### Middle School

Breakfast ..... \$ 1.35  
 Regular Lunch..... \$ 2.00

### Faribault High School

Breakfast..... \$ 1.35  
 Main Lunch Line..... \$ 2.00  
 Premium Lunch..... \$ 2.45  
 (Pizza, Deli, Creations Stations)

### Other Meal Prices

Adult Breakfast..... \$ 1.60  
 Adult Lunch..... \$ 2.90  
 Non-School Age Children...\$ 2.90

## Faribault Area Learning Center

**Jeff Selberg, Principal**  
**Phone: 333-6187**



### New Staff at FALC

New additions for the Faribault Area Learning Center's 2010-11 school year include a high school English teacher and middle school Targeted Services teacher.

**Kari Anderson** will be joining the FALC High School. Kari has taught English in Gr. 9-12 for the past three years. Her experience includes curriculum development and serving as an academic advisor for at-risk students. Kari earned her B.A. teaching degree at the University of Minnesota and is currently working on earning a Masters of Education at Concordia University in St. Paul.



**Kevin Tschann** has taught Social Studies at the FALC-HS for the past four years; he will now use his experience to teach reading and social skills development at Faribault Middle School. As a

Targeted Services teacher, Kevin will also be teaching organizational skills that students need to be better prepared for their classes.

### FALC Wall of Honor

One of the ways the FALC-HS honors students who have completed their high school graduation requirements is the signing of the Wall of Honor. The Wall of Honor, first established in September, 2001, has now become a focal point at the FALC-HS. The wall serves two purposes. First, it honors the graduate by having their name on the wall for all to see. Second, it provides incentive and hope for other students

**"The FALC Wall of Honor provides incentive and hope that graduation is possible."**

who have yet to graduate. When current students see other students whom they know that have signed the wall, they realize that graduation is obtainable. Once all the lines on the Wall of Honor have been filled, a professional photographer takes a photo of the Wall. The photo is mounted and framed and the wall is repainted. The Wall of Honor has been filled twice with signatures that signify 615 graduates.

Prospective students interested in learning more about enrolling at the Faribault Area Learning Center High School should contact Jeff Selberg at 507-333-6186.

## Faribault Middle School

**Phone: 333-6300**

### Back to School Information

**Open House:** Sept. 1, 4-8pm

### Orientations:

Aug. 25, Grade 6; Aug. 26, Grade 7; Aug. 27, Grade 8  
 (There will be no Right Start)

### School Supply Lists

See the school district website for all elementary and middle school student supply lists:

[www.faribault.k12.mn.us/parents/SchoolSupplies.aspx](http://www.faribault.k12.mn.us/parents/SchoolSupplies.aspx)



## Operating Levy Up for Renewal

### Be Sure To Vote November 2!

A precinct map is provided on page 2 to help you find your precinct voting location. **See page 24 for more details on this important voting day.**

## Year of the Reader

**Feb. 28, 2011**

The Faribault Schools Year of the Reader committee enters the 24th year of bringing author and/or illustrators to students of Faribault. This year's visitor the week of Feb. 28, 2011 will be Alison McGhee.

She has written both picture books and chapter books for children and adults. For details visit [www.allisonmcghee.com](http://www.allisonmcghee.com). Allison will visit with students in the Fblt. Elementary schools, Nerstrand Charter School, Fblt. Lutheran Schools, Divine Mercy Catholic School and students from MSAD. McGhee will do a presentation about her writing and her books will be available for purchase by students at discount prices.



**Alison McGhee**



## District Technology Department

### Faribault Public Schools Website

[www.faribault.k12.mn.us](http://www.faribault.k12.mn.us)

A multitude of information for students, parents, staff, and community is available on our site. Features include news and notes section, spotlight items, and an interactive calendar which includes information about district events, sporting events, committee meetings, and school building events.

Other areas of information include school board agendas and minutes, online job applications, emergency school closings, student handbooks, school newsletters, and school supplies.

Each school and department has their own webpage, and parents can look up specific information about their child's school by accessing these web pages.

- Submitted by Maria Hanson, District Webmaster

## Children's Dental Service

### Will Provide Care in 2010-11



Children's Dental Services (CDS) was established in 1919 and its mission is to improve the dental health of

children from families with low incomes by providing accessible treatment and education. CDS is a non-profit public clinic that provides dental care to children and pregnant women.

CDS works to eliminate cultural and language barriers to care by providing targeted and translated services with a multilingual, multicultural staff, that speak 15 different languages. CDS accepts all forms of public and private dental insurance and has a sliding fee scale for low-income families.

CDS is a pioneer of Head Start site-based dental care: it was the first in the nation to provide on-site dental care to these centers. In the fall of 2010, CDS will also be extending services to the Faribault Public School District. CDS is actively seeking consent from parents in this region. For more details, parents should contact CDS at 612-746-1530 or their school nurse.

The Year of the Reader committee started when a group of Faribault teachers and librarians attended an author banquet in Rochester and decided that we should do this for the Faribault students to encourage reading and writing and to show

students that authors are real people just like them. Many of these same people are still helping with the program, even though some are now retired. Over the years many of the authors have talked about that they were not always readers and writers. Twenty four years ago there was some grant money and donations from a couple of local groups to get this started. The

local parent groups have donated on a per student basis for 23 years.

Other sources of money over the years have been grants/donations from the Blandin Foundation, The Loft, and Wal-Mart. The Bahl Foundation has helped fund the program since 2007. No school district money supports this activity.



# ENRICHMENT

LIFELONG LEARNING

FARIBAULT COMMUNITY EDUCATION

Offered in collaboration  
by the Faribault Public  
Schools & the City of Faribault

**Jeff Jarvis**  
Program Coordinator

15 W. Division Street  
Faribault, MN 55021  
jjjarvis@ci.faribault.mn.us

## Our Mission:

Community Enrichment seeks to improve the quality of life by providing lifelong-learning opportunities for all members of the community. Lifelong-learning is based on the belief that people are learners at every age and are entitled to pursue educational opportunities that are meaningful to them. The success of a community education program relies on the active involvement of our citizens.

## Class Registration

Please register for classes at the Community Center, by mail or now by phone with a credit card. We reserve the right to cancel classes due to low class registration. Persons wishing to withdraw from a class must give 72-hours notice from registration deadline or class start date in order to receive a full refund.



## Granny Basketball

*"A Gentle Game for Women of a Certain Age"*

An opportunity for women age 50 and above to play in a free program called "Granny Basketball" is now available.

In this unusual game, players may only dribble twice per possession, and running or jumping is against the rules!

This is a very low-impact sport. Granny ball players are not required to have athletic ability or previous experience, the only requirement is they need to sustain moderate physical activity for several minutes at a time.

The hope is to generate more interest in this fun game and set up teams by Fall. For details, contact players Cheryl Sterling at 507-334-9716, or Judy Lee at 507-334-9527. Meets Monday evenings beginning in mid-September.

Register at the Community Center by October 4th. (Program #1005)

[www.GrannyBasketball.com](http://www.GrannyBasketball.com)



## Babysitter Training

This popular Red Cross course gives students aged 11-15 the knowledge, skills and confidence to care for infants and children. Must attend the full day to become certified. Please bring a bag lunch and a baby doll. Treats & juice provided.

CPR training included.

Min/Max: 10/16 per class. Location: Washington

Fee: \$35 Saturday Programs

#1595L: Sept. 4, 8:30-4:30pm (Instructor: Crystal Thomas)

#1595M: Nov. 13; 8:30-4:30pm (Instructor: Crystal Thomas)

#1595N: Dec. 11, 8:30-4:30pm (Instructor: Crystal Thomas)



## Youth Firearm Safety Training

Attendance required at all seven sessions to become certified. Must be age 11 by class start date. Birth certificates (or driver's license) are required at time of registration. Parent/guardian must provide transportation and accompany student on Field Day. Bring an addressed, stamped envelope to the first class.

Location: FMS Cafeteria

(SPACE IS LIMITED. REGISTER EARLY!)

#1250: Sept. 13, 14, 16, 20, 21, 23; 6:30pm Fee: \$15

(The required Field Day is Sat. Sept. 18, 7:45-12:30pm, and meets at the FMS Parking Lot.)



## Youth Snowmobile Safety Training

The Faribo Sno-Go Club is once again sponsoring Youth Snowmobile Safety Training. Students need to be aged 12-15, and be 12 by Feb. 15, 2011. State law requires those born after Dec.

31, 1976 to possess a safety certificate for snowmobile operation. All classes are required as there are no make-ups. It is mandatory for parents to attend the first 1/2 hour of class on Nov. 8. Adult training on CD is available for ages 16 and older - inquire at Park & Rec. Call the instructor at 332-0086 for more information.

Meets Mondays, Nov. 8 & 15 & 22, 2010.

(Birth certificates are required at time of application, no exceptions.)

#1251: Nov. 8, 6pm, check-in & registration, class begins at 6:30, & also meets Nov. 15 & 22, 2010; 6:30-8:45pm. (Driver's test date TBA.)

Fee: \$10.00 Instructor: Dale Drentlaw

Location: Washington Rec Ctr.



## Stingrays Swim Team

The Faribault Stingrays are a year-round competitive swim team offering high-quality professional swim coaching and technique instruction for all ages and abilities. For details call 612-860-2599 or email Coach Mark at: stingrayswim-coach@charter.net. See the Stingray's website: [www.teamunify.com/Home.jsp?team=mnsst](http://www.teamunify.com/Home.jsp?team=mnsst)

## The Science Behind the Magic

Join Science Explorers as we investigate a wizard's laboratory. Youth Gr. 1-5 will become apprentices as they learn the science behind the magic. They will learn to harness electricity to make magic wands. The kids will explore the secret world of alchemy, creating scientific potions and more in this fun, hands-on imaginative class. For details, contact Stacy at 763-544-5441.



#1560: Saturday, Nov. 6; 9:30-11:30am

Location: Washington Ctr. Room 104

Fee: \$18. (Min 10/Max 16)

science and the world believe science sparks wonder and imagination in children and allows them to use their natural curiosity for discoveries. The curriculum has been designed to help children develop problem solving and creative thinking skills.



Science Explorers, Inc. is a unique program designed for kids... hands-on fun while learning about

around them. We be-

lieve science sparks wonder

and imagination in chil-

dren and allows them to use their natural curiosity for discoveries. The

curriculum has been designed to help children develop problem solving

and creative thinking skills.



## Tuneful Tots Music Program

This 5-week creative musical program for ages 1-4 enhances cognitive learning through active musical participation. Activities include singing, instruments, dancing and more! Register early, these classes fill fast! Classes are held at Wash-

ington Center instructed by Londa Schmidtke. Two scheduled sessions meet on Saturday mornings at 9am and 10am, with all classes held at Washington Center.

Class Fee: \$25 per session. Instructor: Londa Schmitke

Session I: Saturdays, Oct. 30-Dec. 4 (Skip Nov. 27)

#1674A: 9am-9:45am

#1674B: 10-10:45am

Session II: Saturdays, Jan. 8-Feb. 5, 2011

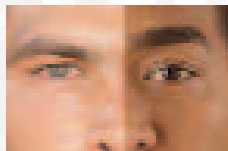
#1674C: 9am-9:45am

#1674D: 10-10:45am

## RACE: Are We So Different?

### Free Bus Trip to The Art Exhibit!

The Mayo Clinic and Rochester Public Library have partnered to bring the national "RACE: Are We So Different?" exhibit to the area.



### About the Exhibit

Visit Rochester Public Library (RPL) and explore issues of race through scientific, historical and cultural perspectives. A free charter bus from Buckham Center will be provided.

This interactive multimedia exhibit for students, individuals and families explores the sorting of people by physical differences, development of the "race idea", and human-made

racial categories. Discover that race and racism is not inside our heads, but is built into our laws, traditions and institutions.

### Registration:

#1001: Thursday, September 2, 2010

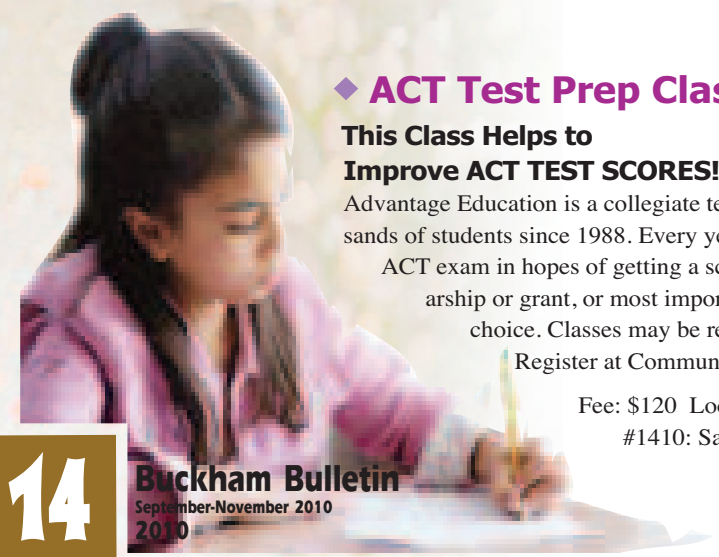
Meets at 12:45pm, bus leaves at 1pm from Buckham Center. Bus will leave RPL at 4pm.

Register in person at the Community Center. (Age 18 and under must be accompanied by a parent or guardian.) Bus space is limited.

"RACE: Are we so different?" is produced by the American Anthropological Association, with assistance from the Science Museum of Minnesota. The exhibit was made possible by funding from the National Science Foundation and the Ford Foundation. Transportation to the exhibit from public libraries is funded in part or in whole with money from the vote of the people of Minnesota on November 4, 2008, which dedicated funding to preserve Minnesota's arts and culture heritage.



For details, see  
[www.mayoclinic.org/RACE](http://www.mayoclinic.org/RACE)



**Buckham Bulletin**  
September-November 2010  
2010

14







# PROJECT A.B.L.E.

## FARIBAULT COMMUNITY EDUCATION

**"Serving  
Persons with Disabilities  
by Achieving a Better Life  
through Education"**

**Project A.B.L.E.**  
15 W. Division Street  
Faribault, MN 55021  
Phone: 384-0515 / 384-0513  
TTY: 507-384-0500  
Email: mmccomiskey@hotmail.com

### A Note From the Director!

#### Fall Classes are coming!

Welcome to One and All! As the fall foliage begins to turn gold, bronze and copper we try to adjust to our changing climate and weather. Try a bike ride or a fall foliage walk in the woods to truly enjoy the changes. Or join one of our cooking classes that focus on the fall harvests in plenty-apples and pumpkins-or enjoy a regular "Turkey Feast" with all the traditional trimmings. Join us on a trip to the Renaissance Fair. We have a variety of crafts classes using autumn themes as well, and, of course, Pizza/Bingo, Film Fun, Mystery Dining, cooking and crafts are a constant throughout the year. We look forward to seeing you.

- Mary McComiskey, Director, Project ABLE



**Fall Class  
Registration  
Begins Aug. 30!**

**Register in person, by mail or by telephone.**  
**M-F 8-4pm, at Faribault Community Center.**  
High School and Middle School Students are welcome to participate in all programs. Please call 507-384-0513 or 507-384-0515 for details.

**1. Payment:** Fees are to be received within 10 days of registration. If immediate payment is a hardship, contact us. Please register one-week before a class so we can prepare for the correct number of participants.

**2. Refunds:** Refunds will be given for most programs if you notify us two full days prior to the event date. Exception: If classes cancel due to low enrollment, fees will be credited to client's account. No registrations will be made for same-day classes. No refunds are given if tickets/supplies have been purchased.

**3. Interpreters:** When registering, please indicate if interpreters are needed. Give at least 4 days notice to schedule or cancel an interpreter.

**4. Staffing:** Resident staff must decide on staff ratios and provide one-to-one supervision when necessary. Project ABLE staff acts as an event supervisor only.

*Project ABLE is a smoke and alcohol-free program. In case of inclement weather, listen to 1080AM KYMN radio or Power 96/KDHL radio for details.*

### Caregiver Reminder:

Caregivers must accompany participants to check in and out of class with the instructor. Participants should report directly to the classroom no more than 15-minutes before class begins and be picked up promptly when event is scheduled to end.

## FALL PROGRAMS

### Arts & Crafts

#### Fabric Apple Bags

Come and enjoy painting and printing an apple tree design onto a fabric bag using apples and then enjoy the leftovers.

#F3330: Sept. 14, 6-8pm

Location: Washington Rec 103

Fee: \$10

#### Marshmallowman Jack-O-Lantern

First hollow out and carve a Halloween face into your pumpkin. Then roast your own marshmallows over the flame inside.

#F3331: Oct. 26, 6-8pm

Location: Washington Rec 104

Fee: \$11

### Cooking Classes



#### Mini Apple Pies

Make and bake your own personalized apple pie with your initials imprinted on it.

#F3320: Sept. 21, 6-8pm

Location: FMS Home Ec Rm.

Fee: \$11

#### Soup & Hot Melt Sandwiches

As we enjoy the changing colors of the fall foliage in the chillier weather, come join us in a warmer endeavor-we will make hot soup and sandwich melts -- mmmm!!

#F3321: Oct 19, 6-8pm

Location: FMS Home Ec Rm

Fee: \$12

#### Thanksgiving Feast

Enjoy turkey, stuffing, gravy, cranberry sauce, veggies and biscuits for a very festive pre-Thanksgiving Feast with your friends.

#F3322: Nov 16, 6-8pm

Location: FMS Home Ec Rm

Fee: \$12

### Social Activities

#### Mystery Dining

Join the group, dine at a different place every month; learn how to order within your budget and order your own nutritious meal while socializing with friends. Location a surprise! Meet at 5:30 in front of the Community Center.

#F3310: Wednesdays, Sept 8, Oct 6, Nov 10

Fee: \$20

#### Film Fun

Come to Washington Rec Center to watch movies, socialize and eat snacks with your friends.

#F3305 Fridays, Sept. 17, Oct 22, Nov 19, 6-8pm

Location: Washington Rec Center 105

Fee: \$5

#### Pizza Bingo Nights

Utilize number recognition, sequencing and patterning skills to be the first one to solve the puzzle and win a bingo prize. Pizza & pop included. PLEASE NOTE: STAFF MUST ALSO BE REGISTERED IN ADVANCE.

#F3300: Fridays, Sept. 10, Oct. 8, Nov. 12, 6-8pm

Location: FMS Cafeteria

Fee: \$10

### Special Events

Trips leave from the Community Center.

Please be 15-minutes early before the bus departs.

#### Fall Walk

Join us as we enjoy a walk in the woods in the Rice County Cannon River Wilderness Area park.

#F3340: Sept 11, 10am-Noon

Fee: \$6.00

Location: Rice Co. Cannon River Wilderness Area Park

#### Bike Ride & Picnic

You have got to get excited about this bike ride-we meet at the River Bend Nature Center, ride along the trail enjoying great fall colors, stop midway for a little picnic and return to our starting point. Bring your friends and their bikes! Dress comfortably!

#F3343: Oct 2, 11am-1pm

Location: River Bend Nature Center

Fee: \$10

#### Fall Dance

Truly a fun time!! Gather up your friends and get some good exercise at another popular Project ABLE dance.

#F3344: Oct. 17, 2-5pm

Location: American Legion in Faribault

Fee: \$10



### THORN CREST FARM VISIT

Enjoy picking your own pumpkin, go through a grass maze, visit the gift shop, drying shed and/or see some farm animals as we get ready for Halloween.

#F3345: Oct. 23 1:30-4:30

Location: Thorn Crest Farm

Fee: \$TBA

### Bowling League

Work on motor skills, increase eye/hand coordination while learning socialization skills. Join the bowling league. Fee includes two games per night.

#F3366-1: Mondays, Sept. 13-Nov.15 (5-6:30pm)

#F3366-2: Thursdays, Sept. 16-Nov. 18 (5-6:30pm)

Location: Faribault Bowling Center

Fee: \$77

Note: We are signing up Project ABLE Youth for a Youth Bowling Team this year from Dec. through mid-March at



Jesse James Lanes in Northfield. More information will be available in our Fall Newsletter.

Fee: Cost to be announced.



## EVE OF DESTRUCTION ELKO SPEEDWAY

#F3341: Oct. 9; 6pm-11pm

Fee: \$30

Location: Shakopee Elko Speedway

Come see the Monster Trucks, Figure 8's, and the School Bus Races!

## RENAISSANCE FESTIVAL

**Come all you lords and ladies, join  
in the merriment of the day!**

There will be jesters to entertain us and delicious foods to tickle our taste buds.

#F3342: Sept 25

Time: 10:30am-4:30pm

Location: Shakopee Renaissance Festival

Fee: \$35



# EARLY CHILDHOOD

FARIBAULT COMMUNITY EDUCATION

**McKinley Early Childhood Center Offers a Variety of Programs for You and Children Ages 0-5!**

**McKinley Early Childhood Center**  
**930 NW 4th Avenue**  
**Faribault, MN 55021**  
**Phone: 333-6460**



## Early Childhood Family Education (ECFE)

ECFE is a program of interesting learning experiences for parents and their children, birth to five years old. Your home is the first place your child learns. During these years YOU are your child's most important teacher. ECFE offers parents a chance to learn from other parents and the children gain skills that will help them in school. Classes are held at the McKinley Center and are open to all families in the community.

## Early Childhood Special Education (ECSE)

To qualify for ECSE a child aged birth-five must show a delay in development or have a medically-diagnosed condition. For ages birth-two years old, a home-based program is offered. Contact the Rice Co. Interagency Facilitator if you wish to make a referral or need more details for children birth-two years old at 333-6804. For children aged three to entering kindergarten, call (507) 333-6455 for more details.

## Early Childhood Screening

Early Childhood Screening is designed to help parents understand their child's development through checking each child's height, weight, hearing, vision, motor skills and speech development along with immunization records. This is required before your child enters kindergarten, however, your child can benefit greatly if the screening is done when the child is 3-4 years old. It will take about one hour to complete.

Appointment only, please call 333-6460.

### Saturday Screenings (8:30-11:30am)

September 18, October 9, November 13, 2010.

### Wednesday Screenings (1:15-5:30pm)

Sept. 22, Oct. 6, Nov. 3, Nov. 17, Dec. 1, and Dec. 15, 2010.

## PreSchool at McKinley

McKinley Center offers a variety of preschool program options for children who are 3 or 4 years old by Sept 1, 2010. Activities are under the direction of an Early Childhood teacher to learn important skills needed in Kindergarten. Emphasis is on social development in a literacy rich environment that promotes pre-reading and pre-math skills.

Section	Time	Age Group	Days
3200-1	AM	4 yr olds	MWF
3200-2	AM	4 yr olds	MWF
3210-1	AM	3 yr olds	TTh
3220-1	PM	4 yr olds	TTh
3230-1	PM	4 yr olds	MTTh
3230-2	PM	4 yr olds	MTTh
3220-2	AM	4 yr olds	TTh

## OPEN HOUSE & REGISTRATION DAY

**Tuesday, Aug. 31, 2010**

**10am-12:30pm & 6-7:00pm**

Come and Register for Fall ECFE classes on Tuesday, August 31, 2010, from 10am-12:30pm and 6-7pm at McKinley Early Childhood Center. No phone registrations are accepted. Registration is first come, first serve. For more information call, 333-6460. There is a sliding fee scale and sibling care will be provided for some classes. See the following listing of Fall ECFE classes and activities.



**Fall ECFE Classes begin the week of September 20 and continue through December 10, 2010.**

## FALL ECFE CLASSES

### BABY STOP

ECFE, Public Health Nursing Service and District One Hospital invite you and your newborn 0-8 weeks old to Baby Stop at McKinley Center, 930 NW 4th Avenue.

Baby Stop meets Thursdays from 10:30-Noon.

Meet other parents with newborns, weigh your baby and learn more about baby growth and development. A public health nurse, a certified lactation consultant and a parenting facilitator will be available to answer your newborn development questions. No preregistration, sibling care is available.



### BABY & ME

Come to ECFE with your baby and learn with other parents about infant care, sleeping and feeding schedules plus new ways to help you enjoy your new role as a parent. Try some new ways to play and make fun activities to do at home.

#3010-1: For parents and infants 2-11 months  
 Mondays, Sept 20-Dec 6 5:00-6:00pm Cost: \$30

#3010-2: For parents and infants 2-11 months  
 Thursdays, Sept 23-Dec 9 12:30-1:45pm Cost: \$30

#3020-1: Tiempo para Bebé For Spanish speaking parents & infants 0-12 months old  
 Todos los viernes de 12:30 a 2:00 pm Costo: \$10

### TODDLERS

Exploring is a key to understanding toddlers. The infant/toddler room offers lots of exploring for the tots and features a parent corner so that the kids can keep an eye on you while they explore. You stay with your child the whole class time except for the Terrific Twos.



#3030-2: Wonderful Ones (11-23 mos)  
 Tuesdays, Sept 23-Dec 9, 8:45-10am Cost: \$45

#3040-1 Supertots (18-30 mos)  
 Mondays, Sept 20-Dec 6, 8:45-10:15am Cost: \$45

#3050-1: Terrific Twos (23-35 mos)  
 Parents & children separate during discussion time)  
 Wednesdays, Sept 23-Dec 9, 8:45-10:15am Cost: \$45

#3050-2 Terrific Twos (23-35 mos)

(Parents & children separate during parent discussion time)  
 Fridays, Sept 24-Dec 10, 8:45-10:15am Cost: \$45

#3060-1 Twos & Threes (30-47 mos)  
 (Parents & children separate during parent discussion time)  
 Mondays, Sept 20-Dec 6, 10:30-Noon Cost: \$45



### THREES & FOURS

This class works well for Discovery or McKinley Preschool parents and kids. The focus is on activities and parent information of 3-5 year olds as their independence and skills increase. Parents separate from the children during parent discussion time. Children must be 3 years old by Sept 1, 2010.

#3070-1: Tuesdays, Sept 21-Dec 7 10:30-Noon  
 Cost: \$45

### DISCOVERY

This once a week preschool opportunity is for children age 3 years by Sept. 1, 2010, to learn and grow with kids their own age. Parents must choose any parent/child class during the week so your child can have a twice a week experience. Mondays are co-taught by a speech pathologist and an ECFE teacher to emphasize language and articulation development.

#3110-1: Wednesdays, Sept 22-Dec 22 (10 wks) 12:45-2:30 Fee: \$60  
 #3110-2: Mondays, Sept 20-Dec 20 (12 wks) 12:45-3:15 Fee: \$75



## MULTI-AGE CLASSES

Do you have more than one child ages 0 to 5 years old? Do you want a parent discussion that focuses on family issues rather than specific age information? If so, these classes will meet your needs. We have several days and times to fit your schedule. The children's activities will extend to all ages.

#3160-1: Terrific Tuesdays (0-5 years)  
 Tuesdays, Sept 21-Dec 7, 8:45-10:15am  
 Cost: \$45 (1 child) \$15 for each additional child

#3080-1: Wonderful Wednesdays (0-5 years)  
 Wednesdays, Sept 22-Dec 8, 10:30am-12:00pm  
 Cost: \$45 (1 child) \$15 for each additional child

#3090-1: Friday Connections (0-5 years)  
 Fridays, Sept 24-Dec 10 10:30am-12:00pm  
 Fee: \$45 (1 child) \$15 for each additional child

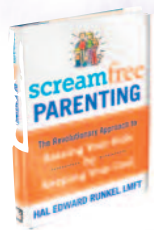
#3100-0: Creciendo Juntos (Growing Together English/Espanol) Miércoles, del 22 de septiembre al 8 de diciembre Hora: 11:30 am a 1:15 pm Costo: \$10  
 Wednesdays, Sept 22-Dec 8 11:30-1:15 Cost: \$10

## ADVENTURE CLASSES

These classes are traditional parent/child classes with flexibility and lots of fun activities for you and child(ren). Parent time away from the children if you choose while the children have fun together with the early childhood teacher. Sign up for the whole fall session!

#3120-1: Toddler Adventures (11-24 mos) Parents stay in room with the toddlers for the whole class.  
 Mondays, Sept 20-Dec 6, 6-7:15pm (10 wks) Cost: \$45.  
 No class Jan 18 or Feb 15

#3130-1: Multiage Adventures (2-5 years) Children younger than two are welcome, but activities will be designed for the 2-5 yr olds.  
 Thursdays, Sept 23-Dec 9, 6-7:30pm (10 weeks)  
 Cost: \$45 (1 child) \$15 for each additional child



## BOOK STUDY THURSDAY

Adults Only! Join us for a discussion of the book ScreamFree Parenting (Runkel). "If you're like most parents, what you're long for is simple: A calmer household with more cooperation and respect, and for your kids to grow up into caring, responsible, self-directed adults." Child care will be available. Books are available for purchase.

Thursdays, Oct 7, 14, 28, Nov 4 & 11 (5 weeks) 10:15-11:30am  
 Cost: Class Fee: \$10 (Book \$12) Childcare: \$3/child/week

## OTHER ACTIVITIES



### PARENTS FOREVER

This 5-week research-based program is designed to help parents make informed, child-supportive decisions, resulting in healthy children and positive parent child relationships, especially for parents experiencing separation or divorce. Call 332-6162 to register for the next session beginning Sept. 23.



### TEEN & YOUNG PARENTS

Young parents and their children learn about caring for babies and young children while balancing time for work, school and self.

#3050-1: Tuesdays, 3-4pm. Cost: FREE  
 Sponsored by ECFE and Rice Co Public Health Nursing Call 333-6834, or 332-6111, or just show up!



## CAR SEAT SAFETY EDUCATION

Private Car Seat Safety Education by certified car seat safety technicians is available at McKinley Early Childhood Center, 930 NW 4th Avenue. Car Seat Safety checks will be held on a weekly basis by appointment. Call 333-6460 for details and to schedule an appointment. A \$20 donation per appointment will be accepted.

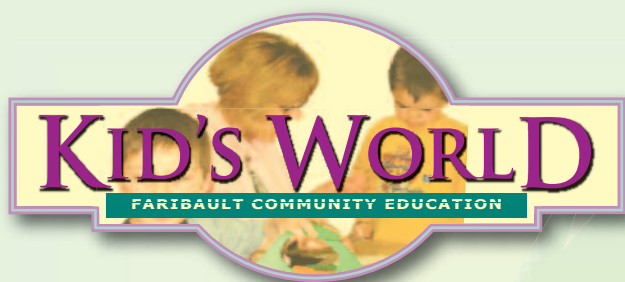
## EAGLE'S FUNDRAISER BREAKFAST

Sun., Nov. 21, 8:30am-12:30pm. Location: Eagle's Clubroom  
 Cost: There is a fee. Menu: Pancakes, Scrambled Eggs, Syrup, Sausage Links, Beverages. Funds used for classroom, gym and play-ground equipment.

## GINGERBREAD HOUSES

Tues., Dec. 14, 6:00-7:15pm (OR) Fri., Dec. 17, 10:30-11:30am  
 Fee: \$10/child. Preregistration required by Fri., Dec 10.  
 Create a gingerbread house to take home and enjoy. All supplies provided, and we clean up the mess! Please register and pay at the McKinley Center Office.





## Childcare Programs for School-Aged Children

**Kids World Childcare**  
Phone: 333-6724  
925 Parshall Street  
Lisa Wetzel, Program Coordinator  
Email: [lisa\\_wetzel@faribault.k12.mn.us](mailto:lisa_wetzel@faribault.k12.mn.us)  
[www.faribault.k12.mn.us/schools](http://www.faribault.k12.mn.us/schools)

At Kid's World, children K-5 are given the opportunity to develop and explore their own interests, participate in crafts, games, and science and nature projects, explore the community, take field trips and to socialize with their friends.

### SCHOOL YEAR PROGRAM

Begins Sept. 7, 2010 through the last day of school.

### LOCATIONS

Lincoln, Jefferson & Roosevelt Elementary programs are open for all before and after-school care and early releases. All non-school days are located at Roosevelt Elementary.



### TRANSPORTATION

The Faribault School Bus System can provide transportation from private schools & charter schools. Parents must call the District Office at 333-6000 to get a bus pass and information if transportation is needed.

### PROGRAM FEES

#### BEFORE SCHOOL

M-F 6:30am-8am, \$2.60 per child/hr. 1-hr min. charge, billed every 1/2-hour after that.

#### EARLY DISMISSALS

2nd Wed. of each month  
\$2.60/hour/child

#### AFTER SCHOOL CHILDCARE

M-F, 3-6pm \$2.60/hr/child.

1-hr. min. charge with billing by the 1/2 hr. after that.

\*New Family Registration: \$20

\*Returning Family Registration Fee: \$15

\*Pre-Payment Deposit: \$50

\* *Must pay to begin Kid's World program.*

### CONTRACTS & RULE BOOKLETS

Contracts and rule booklets for registration are available at the Roosevelt Kid's World office, each of the Elementary Schools or the Community Center, 15 W. Division.



## What's Coming Up?

### Wednesday, Oct. 13

Early Dismissal  
(Jefferson, Lincoln & Roosevelt)

### Oct. 20, 21, 22

Full Days at Roosevelt

### Wednesday, Nov. 24

Full Day at Roosevelt

Open to all school-age Children. Call or e-mail to inquire about registration and costs. These days fill up fast!



*Helping People Discover,  
Enjoy, Understand, and  
Preserve the Incredible  
Natural World That  
Surrounds Us!*



**River Bend  
Nature Center**  
1000 Rustad Road  
Faribault, MN 55021  
Phone: 332-7151  
[www.rbnc.org](http://www.rbnc.org)

**River Bend  
RAMBLE**

## Fundraiser Night

Sat., Oct. 9, 2010, 5:30pm

Don't miss this annual fundraising event for the Nature Center which includes dinner and exciting live and silent auctions. Please call us if you have a new auction item to donate! Tickets will be available for purchase online. For additional information call RBNC at 332-7151, or visit our web site at [www.rbnc.org](http://www.rbnc.org).

## Community Programs

### ◆ Enchanted Forest

Sat., Oct. 30, 3-7pm

Join us for a completely revised and updated Enchanted Forest. This event has been re-designed for fun for the whole family. Watch for more details on the activities that will make this a night to remember. Free for members and there is a charge for non-members. Be prepared to show your membership card to get in for free!



## Youth Programs

### ◆ Preschool Nature Play

Sat. Sept. 11, 9am-12pm: Incredible Insects

Sat. Oct. 9, 9am-12pm: Falling Leaves

Sat. Nov. 13, 9-12pm: How Do Animals Hide?

Bring your preschoolers for a morning of fun! There will be activities you can do on your own or join a naturalist for an organized activity. Come and go when it is convenient for you. The specific activities taking place are as follows:

9:30am Story/puppet time

10am Nature snack

10:30am Nature exploration

11:30am Nature art

All preschool ages are welcome if accompanied by an adult. Registration not required. \$10/child members or \$12/child nonmembers

## Homeschool Programs



### ◆ Science Alive Series

Join other homeschoolers to take advantage of the unique learning environment at RBNC. Come explore and expand your knowledge about our prairie, forest and water habitats! These classes focus on outdoor, hands-on experiences with native plants and animals. Classes run Oct. 5-Dec. 14.

Fee: \$75 M, \$90 NM.

Times: Gr. 9-12 (9-10am), Gr. 6-8 (10:30-11:30am), Gr. 3-5 (12-1pm), Gr. K-2 (1:15-2:15pm)

Pre-registration required and space is limited.

## Family Programs

### ◆ Bagels & Birds (FREE for all ages)

Sat., Oct. 2 & Nov. 6; 8:30-9:30am

Join a naturalist in the comfort of the building to observe birds (and other) visitors to our backyard habitat feeding area. Help with ID, fun facts, binoculars, guidebooks, and conversation will make this a great way to start the day! Enjoy coffee and bagels in a relaxed atmosphere while watching the antics of wildlife.

### ◆ Autumnal Equinox & Almost Full Moon Hike

Thurs., Sept. 23, 7:30-9:30pm

Tonight is the fall equinox with equal day and night times. Join us to stroll the forest and prairie as the almost full moon lights our way. Campfire with S'mores at 8:30pm will be held after the hike.

FREE members, \$3 NM

### ◆ Starry Night FREE for all

Sat., Nov. 6, 7-8pm

Take advantage of the new moon (no moonlight) and early sunset by joining River Bend staff to view and learn about the night sky. Our viewing coincides with the Taurid Meteor shower so be ready to count falling stars. We'll search for constellations and use binoculars and scopes to scan for stars and planets. Dress to be outside.



### ◆ There's a Fungus Among Us!

Sat., Oct. 2, 2-3pm

Ever wonder about the diversity of fungus? First we will learn about their structure and functions by dissecting edible mushrooms and learning how to do spore prints for identification. We will then take a walk through the forest searching for and examining the large variety of mushrooms that flourish in the cooler days of fall. Dress to be outside and exploring in the forest. All ages are welcome.

Program is FREE for members and \$3 for nonmembers.



### ◆ Looking At Leaves

Sat., Sept. 18, Part 1, 10-11:30am

Part II 2-3:30pm

Part I of the program will focus on identifying trees using their leaves and how to make collections. It will not be suitable for young children. This part is free.

Part II will use leaves to create dazzling works of art. Bring your own pressed leaves or we will have a supply here. Art will include collages, leaf printing, leaf rubbing, and more. This part is FREE for members and \$3 NM.



# PARADISE CENTER Arts for the A

321 Central Avenue  
Faribault, MN 55021  
Phone: 332-7372

www.paradisecenterforthearts.org  
Hours: Tues.-Fri. 10-5, Sat. 12-5pm

## Ryan Heinritz

Executive  
Director,  
Paradise  
Center  
for the  
Arts



## Class Scholarships

Scholarships are available for qualifying families through Three Rivers Community Action. Call us for details. For more details, call Carol Juvland at 507-333-6450.

## Class Registration

Registration deadline for all classes is one week prior to class start. Classes are cancelled if minimum participation is not met.

## Use the Facility!

### Members Benefit Program

If you don't need instruction, but would like time to create Art, then this is the place for you. Open Studio gives you access to our potter's wheels, painting studio and batik lab. This is a great opportunity to work with fellow artists. Open Studio is Tuesdays at 1-3pm, or 7-9pm, in 4-week segments. Purchase a punchcard to attend any of the segments. Punchcards (4-sessions) \$30 members, \$50 non-members.

### Private Rentals

The Paradise Center for the Arts is now offering private rental in all offered art mediums. Private rentals are a great way for Boy & Girl Scouts, church groups, homeschoolers or other groups to spend an evening together creating Art. Call for further details.

### Attention Writers!

Join the Paradise Literary Arts Group the second Sat. of each month at 12noon. Call Paradise at 332-7372 for more details!



## Exhibits In The Carlander Family Gallery

*This Gallery was paid for by a generous donation from the Richard and Lorraine Carlander family. View the exhibitions, and join us for receptions free of charge!*

### ● Shoe Stories

**Exhibit runs through September 25!**

A creative and highly imaginative exhibition of art works, all of which include parts of or whole shoes! Admission: Free

### ● Chi Explosion: Sum I Painting

**October 1-November 13**

Artist's Reception: October 1, 5-7pm



## Theatre & Musical Events

### In The Bahl Family Auditorium

#### ● "On Golden Pond"

Oct. 1, 2, 7, 8 & 9 at 7:30pm

Sunday, Oct. 3, 2pm

#### ● "Sun Valley Christmas"

December 3, 4, 9, 10 & 11, 7:30pm

December 5 & 12, 2pm



## Fall Art Classes

### Class Information

We will be offering beginner classes in many media this fall and winter. Classes are designed for Adults and High School-age students.

Beginner classes take you step-by-step through the process of creating Art.

The Paradise Center for the Arts is committed to offering creative opportunities for beginners as well as those with experience. We offer a variety of classes in our newly renovated studio labs and classrooms.

#### ● FREE Mini-Sampler

Saturday, Oct. 16, 10am-12noon!

This class is designed for those of you who have always wanted to try drawing, painting, pottery, batik, crafts. If you enjoy the free Mini-Sampler, sign up for classes that begin the week of Oct. 26-29, running through Nov. 16-19.

*"Support the Arts. Strengthen the Community"*

#### ● Family Samplers

Saturdays, Nov. 6, 13, 20 (10am-12 noon)

Moms, Dads and kids discover their talents in these three-week samplers. Try pottery, drawing, painting, crafts and batik.

#### ● MEA School Break

Oct. 21 & 22, 10am-12 noon

Open to Gr. 4-7 during MEA. Create a variety of Art projects including pottery, paintings, drawings and much more.

#### ● Photography 101 for Beginners

This entry-level class will teach you how a camera operates and how to take better pictures. The two session class covers the very basic's of good picture taking techniques.

#### ● Drawing 101 for Beginners

This is a great chance for novice artists of any skill level to learn or develop the fundamental skills of drawing. Learn how to draw basic perspectives, shading, proportions and blending techniques.

#### ● Watercolor Painting 101

Explore the fascinating world of watercolor painting. Basic painting techniques will be taught in this media.

#### ● Acrylic Painting 101 for Beginners

Learn basic painting techniques in this media. From brush selection to types of painting surfaces, we cover it all.

#### ● Hand-Built Pottery 101 for Beginners

The class covers slab roller, mold making, tile making and sculpture.

#### ● Throwing Pottery 101 for Beginners

You will be thrilled as you bring clay to life on the wheel. The step-by-step instruction will guarantee a keepsake project.

#### ● Jewelry Making

Porcelain clay is use to create beautiful roses, flowers etc. . These are air-dried for your quick enjoyment. In the 2, two-hour classes you will have a perfect gift for yourself or others.

#### ● Rayon Shawls

Nov. 9 & 10, 6:30-8:30pm

Make and wear your very own shawl. Immersion dying and soy wax applications will be taught. Supply fee: \$20/scarf limit 3. Pre-registration date: Oct. 22.

## Ongoing Art Classes

These classes are for those who have been involved with classes at the Art Center in the past year or are at a more experienced level.

#### ● Batik Lab

Batik Lab is the third Tuesday of the month from 6:30-8:30pm. Join us to continue learning the craft of beautiful batik.

#### ● Acrylic Painting

Tuesdays, 1-3pm

This is a continuation of the daytime painting class. One hour of personal instruction followed by one hour of studio time. Spontaneous critiques and group sharing and feedback occur frequently as artists work alongside one another on projects of their choosing.

#### ● Holiday Gifts: Make It & Take It!

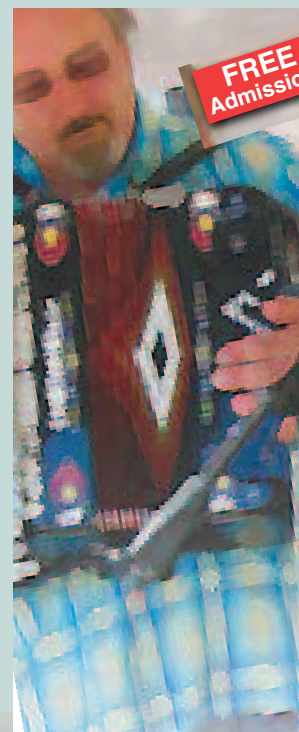
Dec. 4, 10am-12 noon

Do you want something special and unique for a Christmas present this year? Why not join us for "make it and take it classes". Make a shibori silk scarf, jewelry, candles, purses, or paint a ceramic piece for a holiday gift. Open to all age groups, kids through adults. Pre-registration required.



**Aug. 21, 10am-11pm**

Join us for the 2nd Annual bigger and better celebration of summer! Come downtown for a BBQ contest, live outdoor music, theatre, food, beer, ART vendors and other activities!



Martha Schultz, Youth Development Coordinator  
mschultz@faribault.k12.mn.us Phone: 333-6160

### Students Together Offering Peer Support

STOPS is a student leadership program designed to engage a wide variety of students in service opportunities and encourage healthy decision making. The district's youth development coordinator and an 8-member student cabinet advise this student-run group.

Over eighty Grade 9-12 students are enthusiastically involved in STOPS each year. Some highlights in the Schools and Community include:

FHS Chemical Health Week, Double Impact Mock Crash, STOPS Leadership Retreat, Wellness Committee involvement and surveys, School Respect Week, STOPS presentations, SPOTS performances, Tree Frog Festival, Enchanted Forest, Project ABLE, Ruth's House, Big Brothers Big Sisters, SHAC, Double Impact, and much more!



Pat Wieseler, Director  
pwieseler@faribault.k12.mn.us Phone: 333-6471  
201 South Lyndale, Suite K2

### A Free Step Into Your Future!

Since 1975, the Faribault Schools have provided free adult basic education to thousands of community residents. This program helps adults improve basic academic skills to learn English, earn a GED, prepare for college, to support their children financially and educationally, and gain skills to find quality employment in the fast-changing job market.

Each year, certified teachers provide free personalized instruction to more than 500 learners.

A team of Adult Basic Education teachers and support staff are committed to providing a flexible and friendly environment for learning. Our focus is personalized instruction that helps adult learners achieve their education goals.

### Adult Basic Education offers:

#### ESL Classes

Classes Meet Mon.-Thurs., 10-Noon, 1pm-3pm, 6-8pm. (Registered students only)

#### GED Classes

Monday & Tuesday 10am-Noon, 6:00pm-8:00pm

#### GED Testing

Mondays, 5:30pm-9:30pm by appointment only.

These programs are available to adults age 16 years of age and older that are not enrolled in regular day schools.

#### New ESL Student Registration:

Sept. 15 & 16: 10am-2pm & 5-8pm (Registered ESL students return Sept. 8, 2010)

GED classes resume Sept. 13. (MTW, 10-12pm & MT, 6-8pm) (For more information, call 333-6472)



**Buckham Bulletin**  
September-November  
2010

**21**



# Faribault Public Schools

## School District Operating Levy to be on November Ballot

In May 2010, the Faribault School Board unanimously approved a resolution calling for a renewal of the current operating levy. The levy, which has been in place since 1987, must be approved by the voters to continue.

The Board decided to leave the levy at the same amount so that there will be no tax increase if it is approved. An operating levy must be approved by the voters and it provides for additional funds to the District's general fund.

This operating levy provides \$2.1 million annually to the District's budget and is used to support existing programs and services. At \$385 per student, the levy is about ½ the state average for operating levies. Currently, about 90% of Minnesota school districts have an operating levy in place. State law allows for districts to seek approval for levies as high as \$1500 per student although the average is around \$800 per student.

If not approved, the District would need to make budget reductions of \$2.1 million. This is further complicated by the likelihood that the state legislature will further cut funding to public education setting

the stage for even higher budget reductions.

Since this November's ballot will include elections for state and local offices, District officials are concerned that local voters may not notice this important ballot item. To address that, the District intends to communicate with voters in a variety of ways over the next few months. If any civic or service groups would like to arrange for the superintendent to speak with them about this vote, please contact Kathy Matejcek at 507-333-6010.

### THE PRIMARY ELECTION IS NOV. 2, 2010

See Page 2 for a map of precinct locations to show you where to vote.



#### SPECIAL ELECTION BALLOT

INDEPENDENT SCHOOL DISTRICT NO. 656  
(FARIBAULT PUBLIC SCHOOLS)

NOVEMBER 2, 2010

To vote, completely fill in the oval(s) next to your choice(s) like this:

INSTRUCTIONS TO VOTERS  
To vote for a question, fill in the oval next to the word "YES" for that question.  
To vote against a question, fill in the oval next to the word "NO" for that question.

#### SCHOOL DISTRICT BALLOT QUESTION RENEWAL OF EXPIRING REFERENDUM REVENUE AUTHORIZATION

The board of Independent School District No. 656 (Faribault Public Schools) has proposed to renew the school district's existing revenue referendum authorization of \$385 per pupil which is scheduled to expire. The proposed referendum revenue authorization would be applicable for 5 years unless otherwise revoked or reduced as provided by law.

- ☐ YES Shall the increase in the revenue proposed by the board of Independent School District No. 656 be approved?
- ☐ NO

BY VOTING "YES" ON THIS BALLOT QUESTION, YOU ARE VOTING TO EXTEND AN EXISTING PROPERTY TAX REFERENDUM THAT IS SCHEDULED TO EXPIRE

### A Note From the Superintendent



Bob Stepaniak

Going to the voters to ask for tax support is not my favorite part of this job. However, regardless of my feelings, that is how our state has set up the rules for school districts. For the next few months, we will make every effort to provide information to you about this levy renewal. With less state support, it is vital to the future of our schools to maintain this levy.

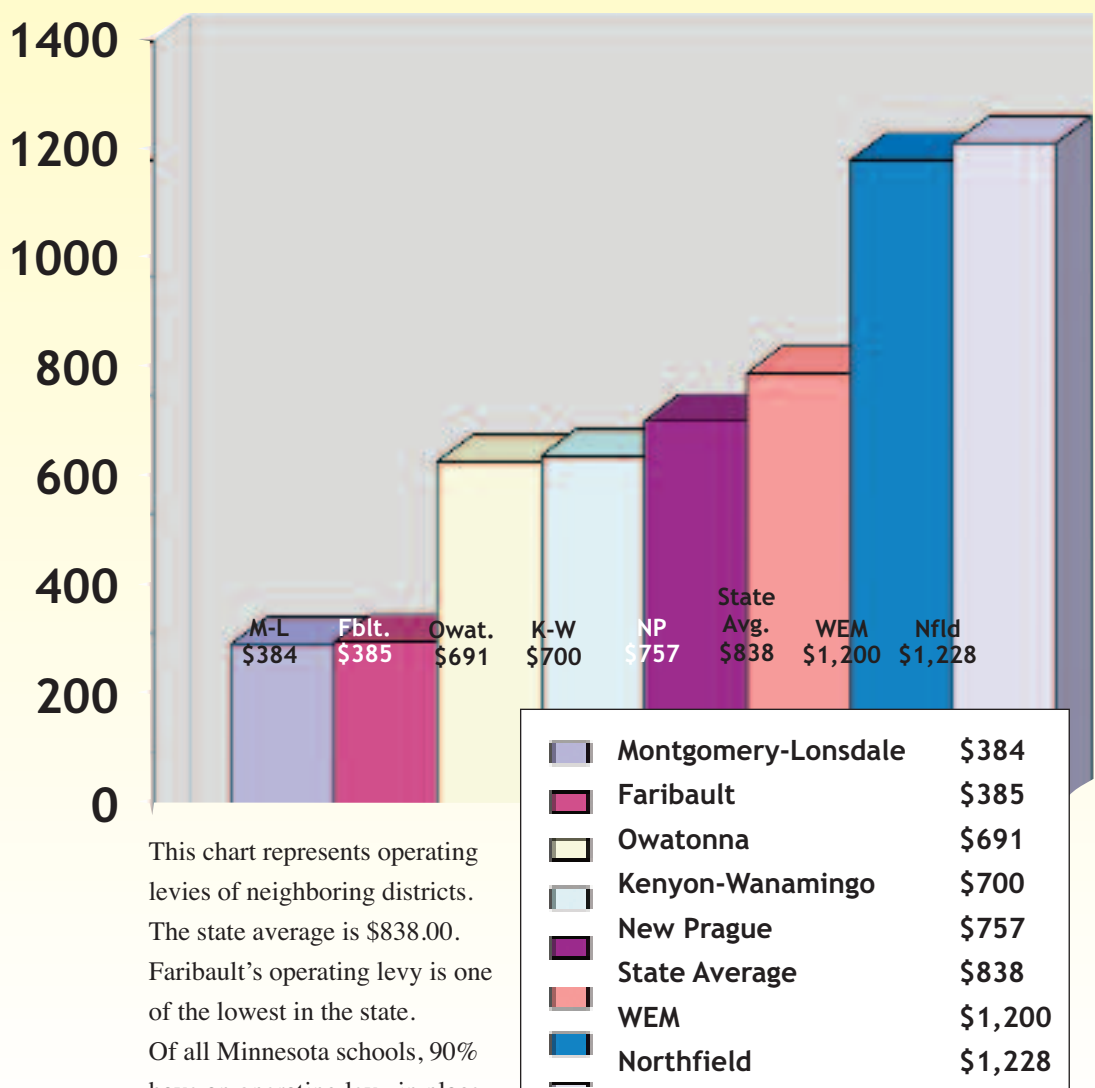
You will see us presenting the following information to the community in a variety of ways:

1. This levy renewal will not increase taxes. It will keep them at the current level.
2. Our current levy of \$385 per student is one of the lowest in the state. In fact, it is close to half the state average.
3. State aid is not expected to increase in the next few years and will likely be decreased. This makes our levy even more important. We are anticipating that we will still have to cut the budget even if this levy passes.

For many months now, the District has worked hard to control costs while maintaining programs for our students. My fear is that our cost-cutting and wage freezes will not be enough to stave off future financial challenges. That is why this levy is important to our schools.

If you have any questions related to this vote, I can be reached at 333-6010 or by email at: bob\_stepaniak@faribault.k12.mn.us.

### Current Operating Levies of Area School Districts (Fiscal Year 2011)



This chart represents operating levies of neighboring districts. The state average is \$838.00. Faribault's operating levy is one of the lowest in the state. Of all Minnesota schools, 90% have an operating levy in place.