

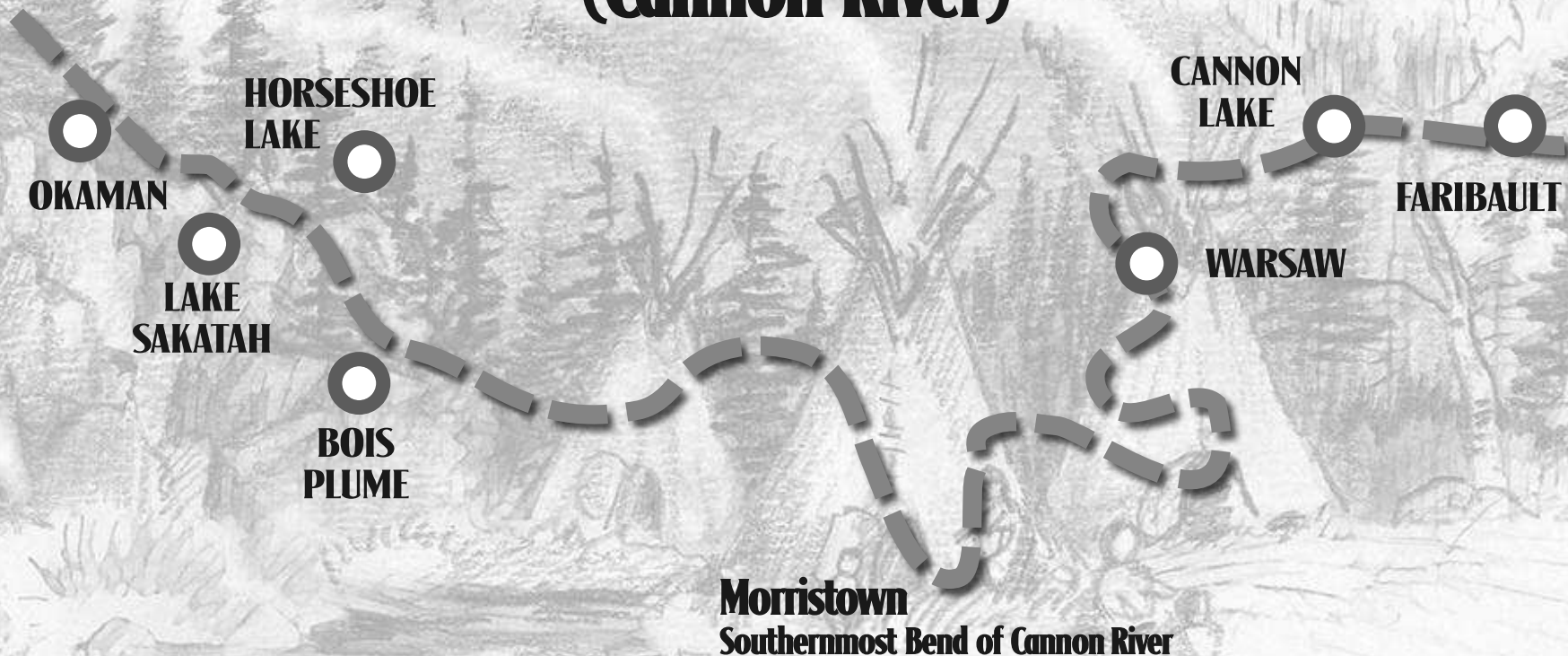


THE AGE OF STONE

© Copyright 2019 Jeff Jarvis - WestCedarStudio.com

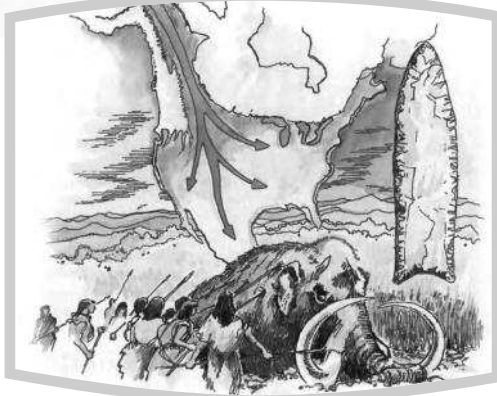
NATIVE AMERICAN SITES

On the Inyan-Bo-Sdata-Wakpa (Cannon River)



7/03

RECOGNIZED TIME PERIODS



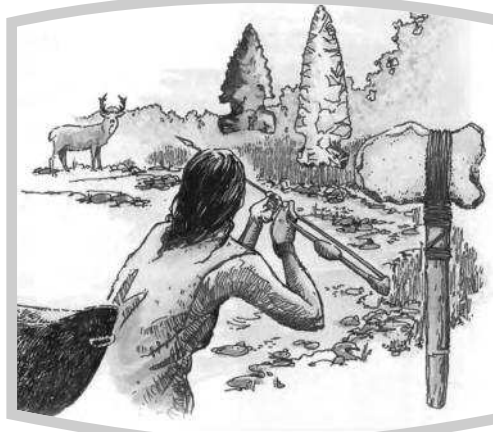
PALEO

12,000 ~ 8000 B.P.

Hunter Gatherers

Blg Game Hunting

Pressure-Flaked Tools



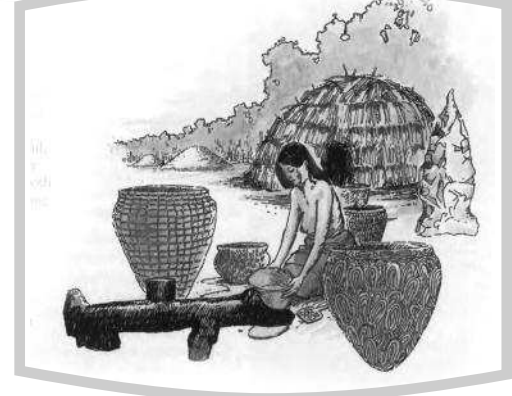
ARCHAIC

8000-3000 B.P.

Hunter Gatherers

Atl-Atl ~ Ground Tools

Weaving ~ Copper Tools



WOODLAND

3000-600 B.P.

Settlement ~ Agriculture

Bow & Arrow ~ Pottery

Artistic Expression

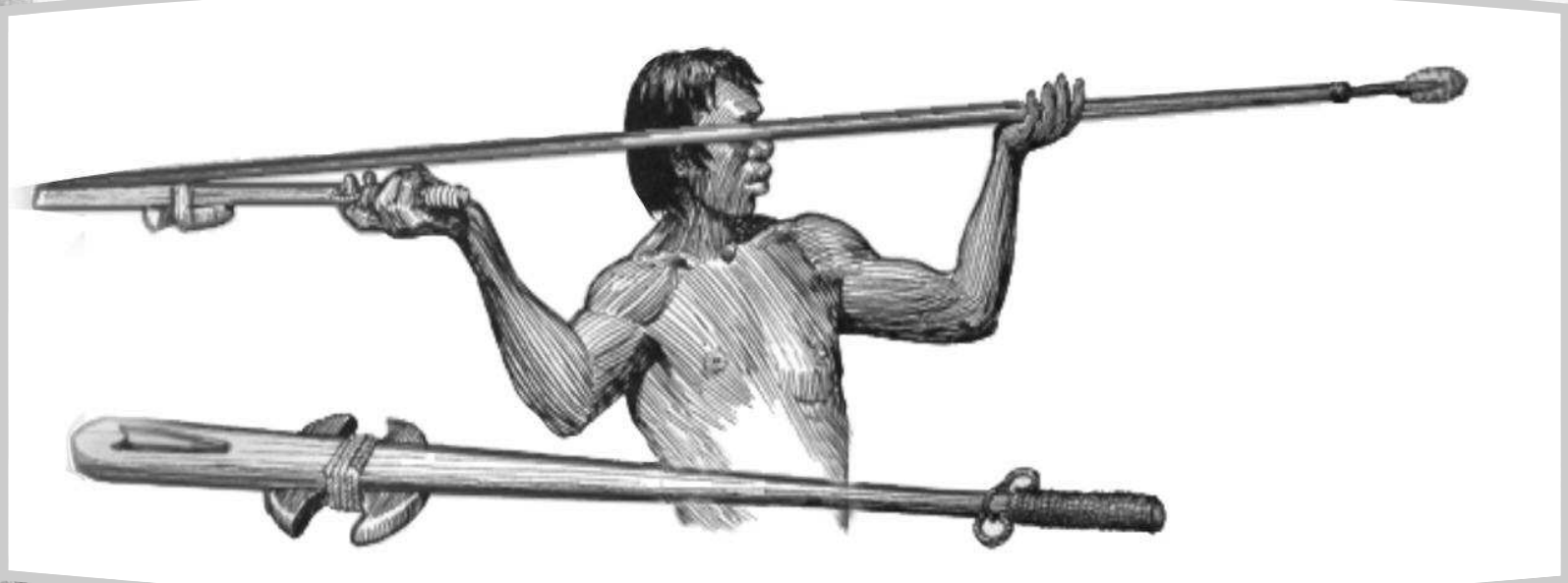
Effigy Mound Building

TYPES OF STONE TOOLS

HUNTING & DEFENSIVE TOOLS:

Projectiles include arrowheads, atl-atl dart points, spears

Defensive tools include Bolo, tomahawk, knife, spear/lance, atl-atl,

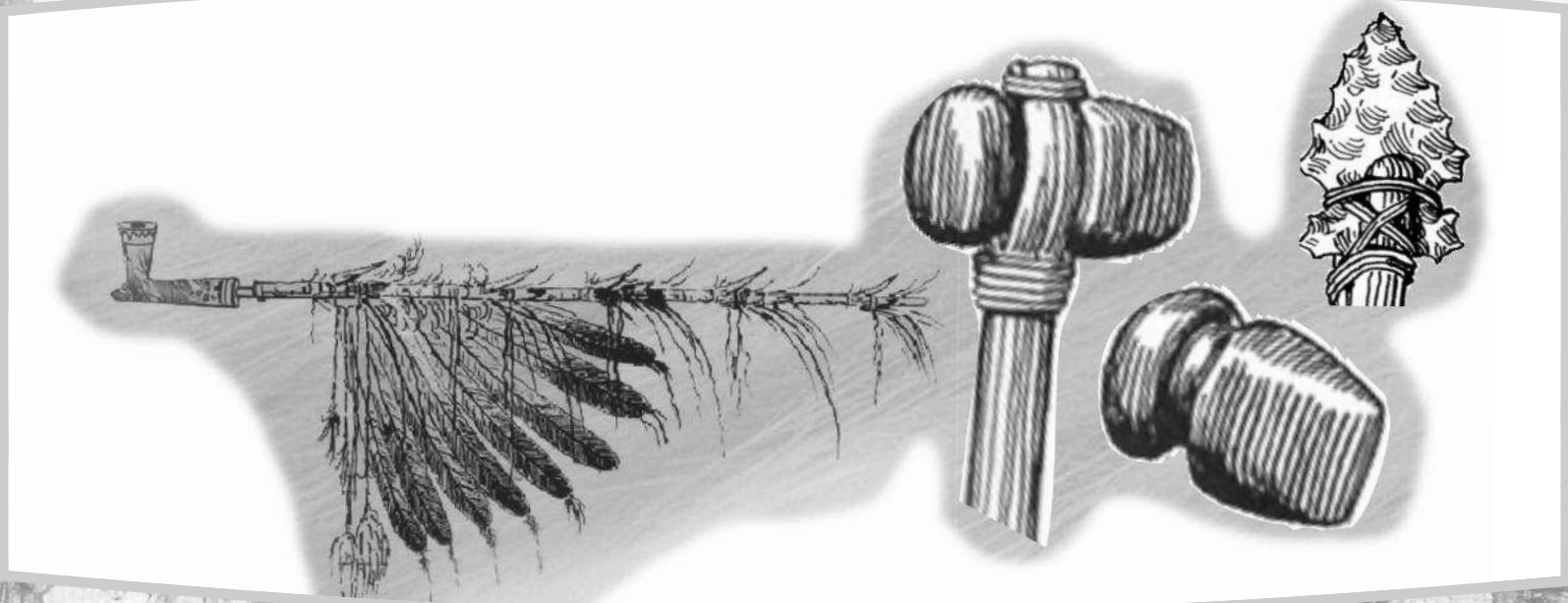


TYPES OF STONE TOOLS

DOMESTIC TOOLS:

Includes scrapers, drill, burin, hammer, club, axe, celt, hoe, knife.

Bone Tools: Sewing needles, knives, arrowheads, hoe, knife handles



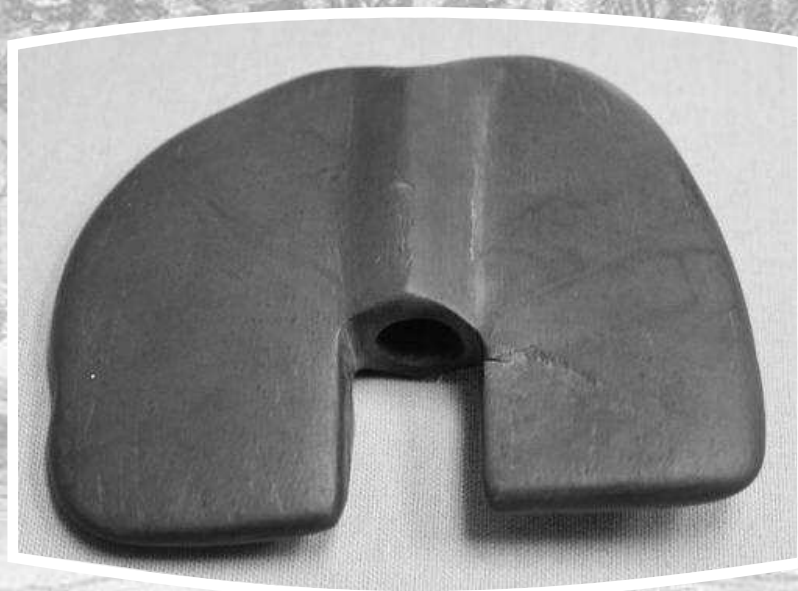
CATLINITE

CEREMONIAL ORNAMENTATION

Pipes, Atl-atl weights

Small Effigies

Bead Ornamentation



TOOLMAKING METHODS



Peck & Grind



Pressure Flaking

TECHNOLOGY

HAFTING WAS A MAJOR SHIFT IN TECHNOLOGY

Hafting increased efficiency, got more work done with less effort: handles for knives, clubs. Atl-atl to bow and arrow in Woodland era



WHAT HAVE WE LEARNED?

Studying artifacts helps us understand the people and their cultures. Patterns of movement and trade routes. Shows people were connected even before the U.S. Mail, Internet and texting.



THE JAN GAAL COLLECTION

Donated to MHS in 2009

Most artifacts found in 1940-1945 around lakes within 20 miles of Morristown

Represents 8,000 years of prehistory



SPEAR POINTS

- ~ Four styles of projectile points shown here
- ~ A variety of materials used



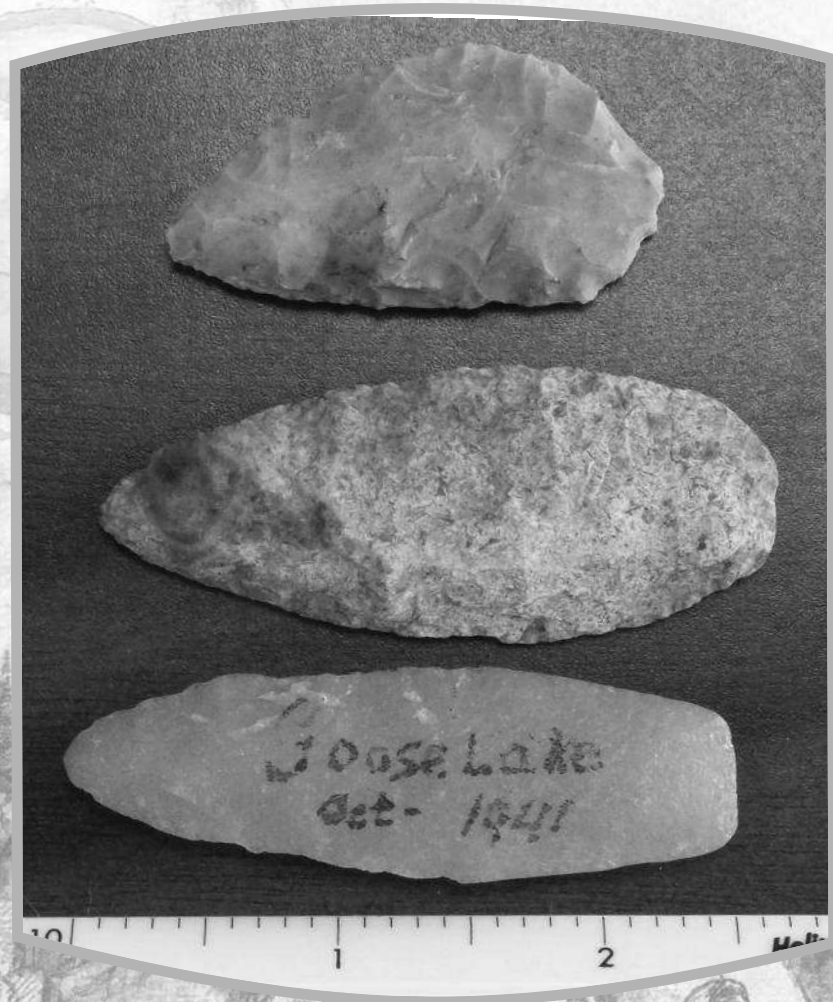
KNIFE BLADES

~ Knife blades



SCRAPERS & BLADES

- ~ Scraper could be used for a hundred different tasks.
- ~ Knife blade, typical leaf shape
- ~ Knife blade made of Hixton silicified sandstone, probably a trade item.



DART POINTS

- ~ Typical spear or atlatl dart points. Side-notched, beveled bottoms.
- ~ Note the silicified sandstone on right.



CEREMONIAL PIECE

~ Ceremonial pipestone piece, probably worn by an elder or chieftain.



SPEAR POINTS

- ~ Typical Adena-style spearpoints made during the Woodland era.
- ~ Rounded base



SPEAR POINTS

- ~ Older spearpoints, unusual style for the Cannon Valley area.
- ~ Bottom right is oldest piece in collection.



BLADE ~ SPEAR POINT

~ Bifurcated or serrated blade (or spearpoint). A rare find in the Cannon Valley area.



SPEAR POINT

- ~ Large pieces found near Gorman Lake and Lake Elysian in LeSeuer County
- ~ Top is probably a Woodland-era Adena spear point.
- ~ Bottom piece was perhaps a knife or ceremonial point.



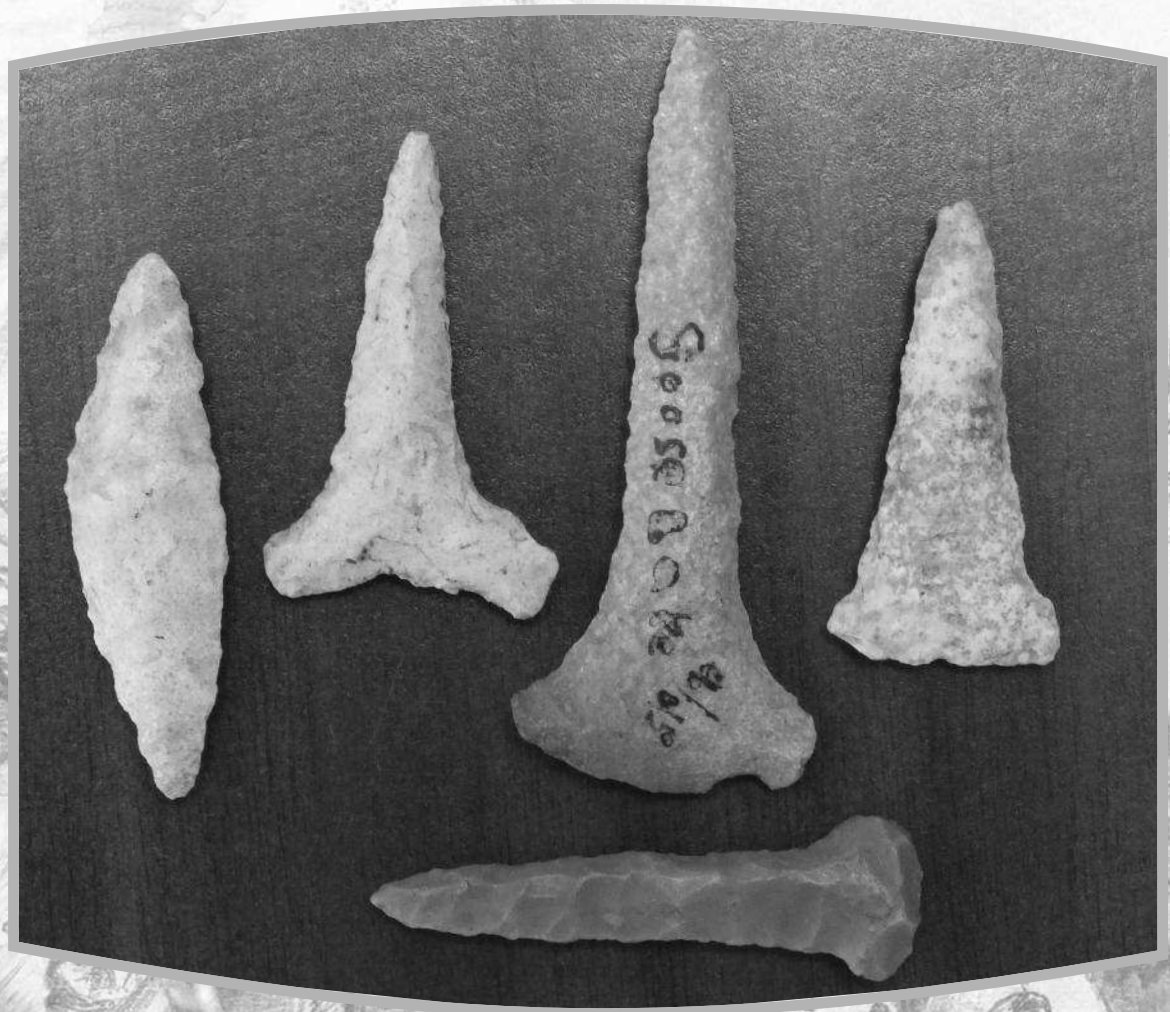
BLADES & SPEAR POINTS

- ~ Five to six-inch knife blades or lanceolates
- ~ Found in Rice County, MN at Shield's Lake and Cedar Lake in 1940s



AWLS & DRILLS

~ Some awls and drills had “T-heads” like these to fasten to a shaft for drilling with a bow.



WOODLAND ARTIFACTS

- ~ Triangular Woodland arrowheads, 1100-300 BP.
- ~ Middle point (knife blade) has unusual ground edges.
- ~ Smaller arrowheads were used for big game





Elysian 1942

Found at Lake Elysian
1940 by Dan G. Minn

Found at French Lake
1940 Minn

Found
Near German
Lake '40

Grooved Axe

Right: Grooved Hammer

2

Helix 3

#18171

4

ENGINEER

5

6

7

1

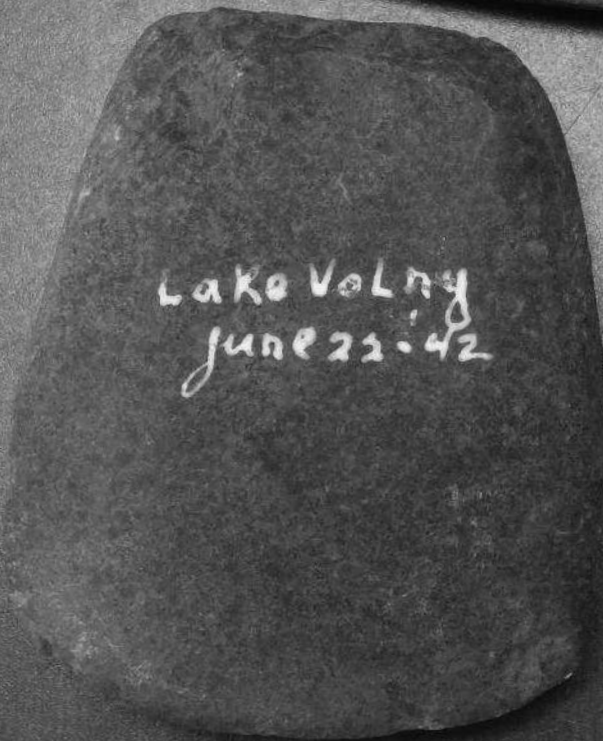


Celt Axe



Game Ball

Celt Axe



Grooved Axe



2

Holix

3

#18171

4

ENGINEER

5